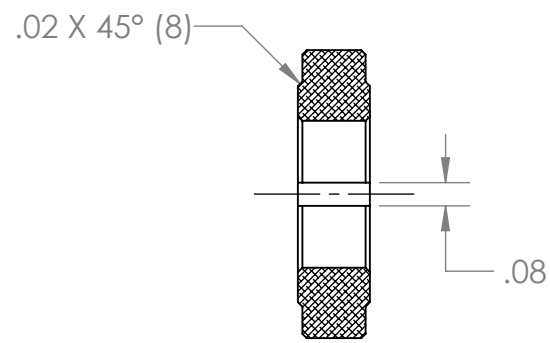
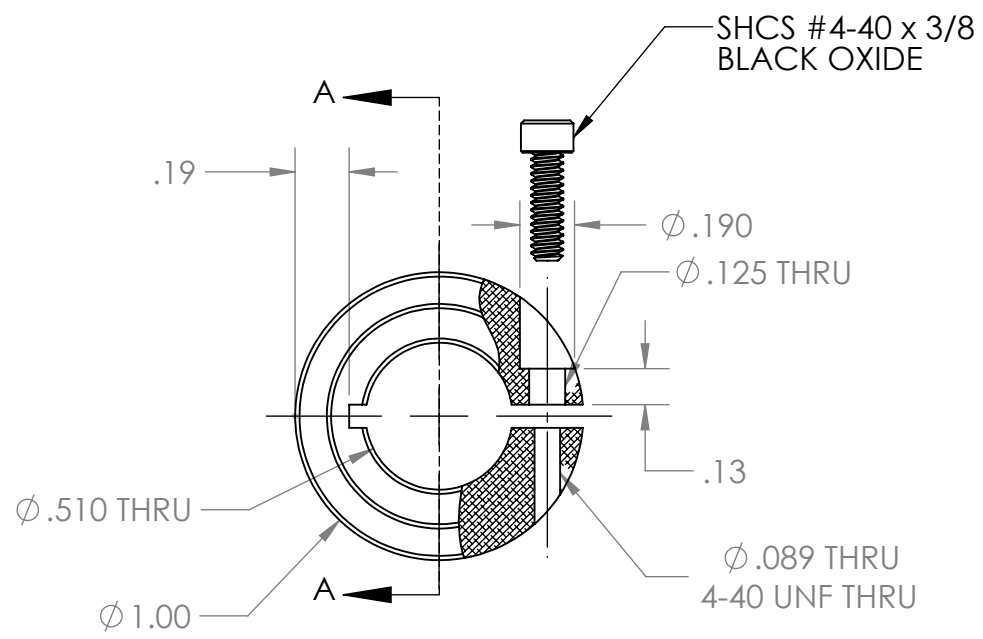
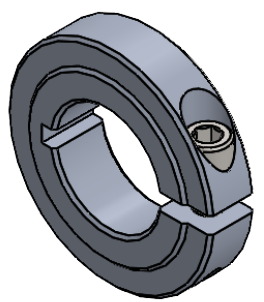



REVISION HISTORY			
REV.	DESCRIPTION	DATE	DRAWN BY
1	ORIGINAL PRINT	7/2/2021	R. SIMPSON
2	UPDATED HATCH PATTERN	6/1/2022	T. JORGENSEN



*** SEE CAD FOR ADDITIONAL TOOLPATH INFO***



UNLESS OTHERWISE SPECIFIED:		COMMENTS:					
DIMENSIONS ARE IN INCHES		DUAL DIMENSIONS ARE IN MILLIMETERS.					
TOLERANCES: FRACTIONAL ±1/16 ANGULAR: MACH ±1° ANGULAR: BEND ±5° ONE PLACE DECIMAL ±0.1 TWO PLACE DECIMAL ±0.01 THREE PLACE DECIMAL ±0.005 FOUR PLACE DECIMAL ±0.0005		BREAK ALL SHARP EDGES.		TITLE: 500 ROUND 1 PART THIN COLLAR CLAMP			
MATERIAL 6061-T6 AL		CHECKED	NAME NL	DATE 6/6/22	SIZE A	DWG. NO. am-1643	REV 2
FINISH DEBURRED		MFG APPR.		SCALE: 1.5:1			SHEET 1 OF 1
DO NOT SCALE DRAWING		Q.A.					